

Next Generation Post Mix Dispensing

The Albi+4 ...less is more

2020 ALBI4 Release Package

- 1 x Albi+4
- Plus Professional Installation (no down time) – Ice & Beverage Solutions
- Plus 4 x 15L Signature Post Mix Syrup
- Plus 12 Months Warranty
- Plus 24/7 National Service & Support – Ice & Beverage Solutions



ARE YOU THIRSTY FOR PROFIT?



ALBI4 COST TO PRODUCE IBS SIGNATURE POST MIX SYRUP BEVERAGE

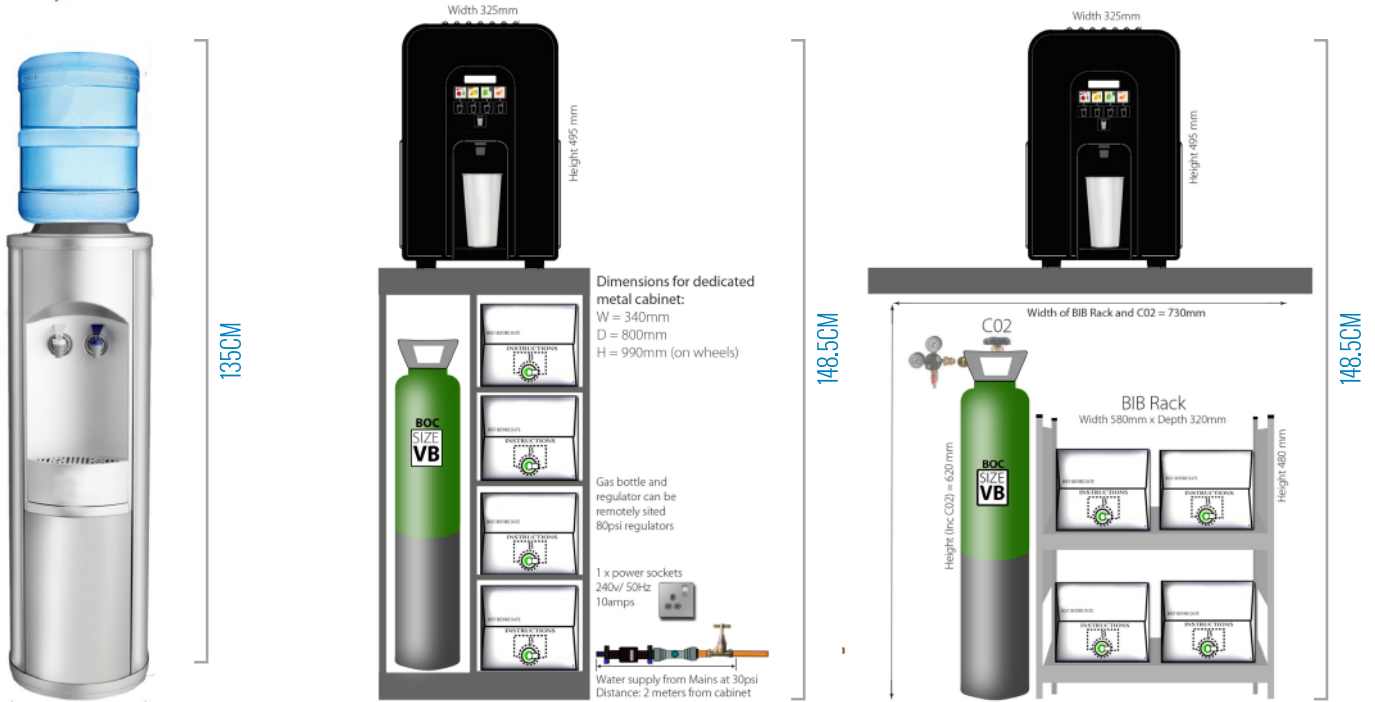
IBS ALL FLAVOURS		
Litre per BIB	15L	
Brix Ratio	5.2	Soda to syrup 5.2 to 1
Finished litres per bag	93L	Higher yield than bottlers across all flavours
Cost per BIB	\$100	Ex Factory ex GST
Cup Serving Size	0.375	
COGS Per 375ml Cup	\$0.21	This assumes an average of \$40% ice per cup. Cost of Goods vs Cans
Average Cost of Ice Per Cup	\$0.01	
Average Cost of CO2 Per Cup	\$0.02	
TOTAL COGS Per 375ml Cup	\$0.24	
Sell Price Per Cup	\$3.50	Example price point
Profit Per 375ml Cup	\$3.26	



For all Albi4 Package enquiries contact 0415 750 457 Email: katrina@iceandbeverage.com.au or logo onto www.iceandbeverage.com.au/ALBI4/

Albi4 Size Comparison to Water Cooler

15/11L bottle



SPECIFICATIONS

- Operating Weight 42kg
- W 404mm x D 745mm (includes Drip Tray) x H 495mm
Note dimensions include 100mm of rear airflow and rear connections and 40mm each side
- 10 amp GPO
- Dispense Capacity - 30mls per second
- 4 Carbonated Flavours

OPTIONAL EXTRAS

- Custom made Syrup Stand (Example as per above images)

EXCLUSIONS

- Food Grade CO2 Bottle
- Dedicated Cold Water Tap (1/2 inch) & Drainage (if required)
- Cutting of Benches (if required)
- Travel outside of Metro Areas

